

# Specifications

## Console

- SPI Ioniser (included).
- Slim design: only 100 mm in width.
- Built-in electronic expansion valve (EEV) for refrigerant flow control (2000-step).
- Two separate air outlets, upper (cooling) and bottom (heating) to avoid stratification.
- Long-life washable permanent filter.
- Auto Restart function.



Indoor Unit		AJ026TNJDKG/EU	AJ035TNJDKG/EU	AJ052TNJDKG/EU		
<b>Capacity</b>						
	Cooling	kW	2.6	3.5	5.2	
	Heating up to +7 °C	kW	2.9	3.8	5.6	
<b>Performance</b>						
	Airflow Rate	m <sup>3</sup> /min	9.0/7.8/6.7	10.5/9.3/8.2	11.2/9.9/8.6	
	Sound Power	Cooling	dB(A)	53	57	60
	Sound Pressure	H/M/L	dB(A)	36/31/23	38/35/24	43/39/32
<b>Electrical Data</b>						
	Power Source	Φ, #, V, Hz	1Φ, 2, 220-240 V, 50 Hz	1Φ, 2, 220-240 V, 50 Hz	1Φ, 2, 220-240 V, 50 Hz	
	Power Consumption	Cooling	W	30	35	50
		Heating	W	30	35	50
	Current Input	Cooling	A	0.25	0.29	0.29
		Heating	A	0.25	0.29	0.29
<b>Dimensions</b>						
	Net Dimensions (W x H x D)	mm	720 x 199 x 620	720 x 199 x 620	720 x 199 x 620	
	Net Weight	kg	15.7	15.7	15.7	
<b>Refrigerant</b>						
	Piping Connections	Liquid Pipe	ø, inch	1/4	1/4	1/4
		Gas Pipe	ø, inch	3/8	3/8	1/2
	Piping Connections	Drain Pipe	ø, mm	VP25 (OD 32, ID 25)	VP25 (OD 32, ID 25)	VP25 (OD 32, ID 25)

## Accessories

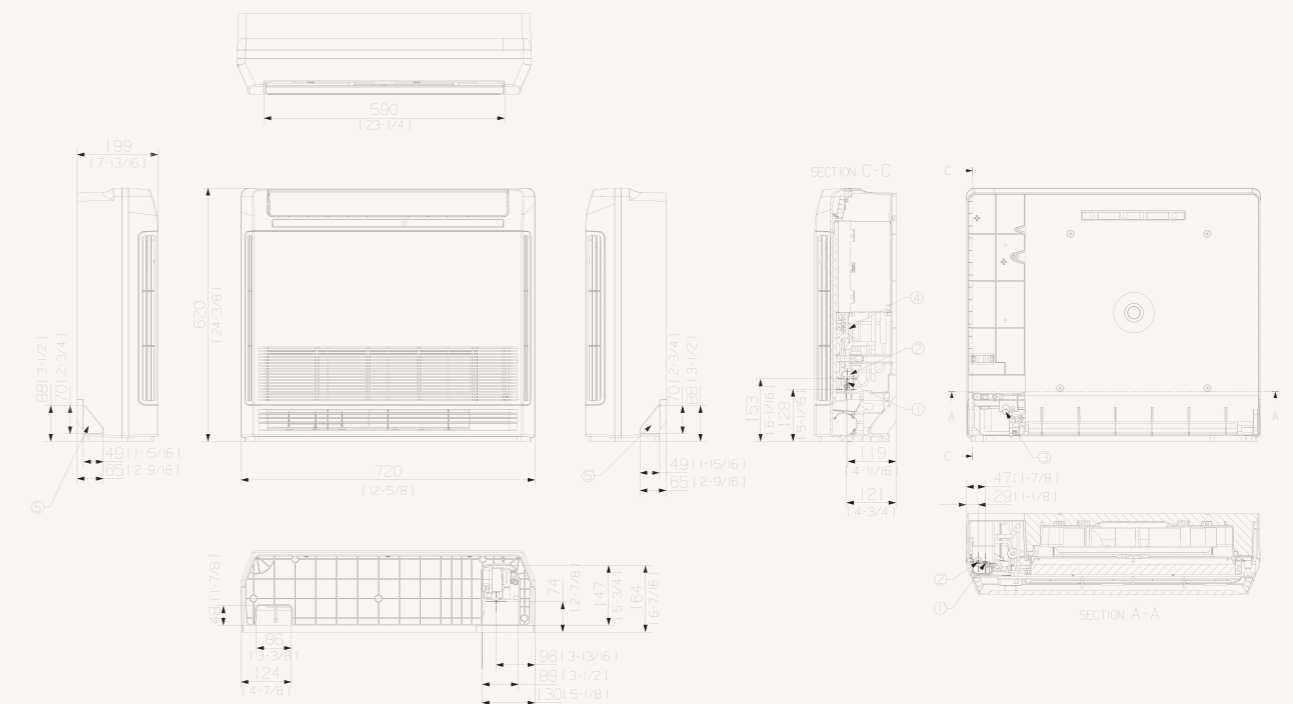


Advanced Wired Controller	Simple Type Controller	Touch Controller	Wired Remote Controller	Wi-Fi Kit
MWR-WG00JN/MWR-WG00KN	MWR-SH00N	MWR-SH11N	MWR-WE13N	MIM-H04EN

# Dimensional drawings

## Console

AJ\*\*\*TNJDKG/EU



NO	Name	Description
		AJ026RBJDEG/EU MH026FJEA
		AJ035/052RBJDEG/EU MH035/052FJEA
1	Liquid pipe connection	ø6.35 (1/4)
2	Gas pipe connection	ø9.52 (3/8)
3	Drain pipe connection	ID18 [11/16] Hose
4	Power supply/communication wiring conduits	
5	Knockout hole for drain hose	